



# **An ideal place to live in the business heart of Warsaw**

Ready for occupancy

# Project

This consists of three 7-12 story residential buildings, which, together with the towers, form a multifunctional complex located in the business center of Warsaw. The convenient location near the metro station and just a few minutes from the city center offers an ideal living environment.

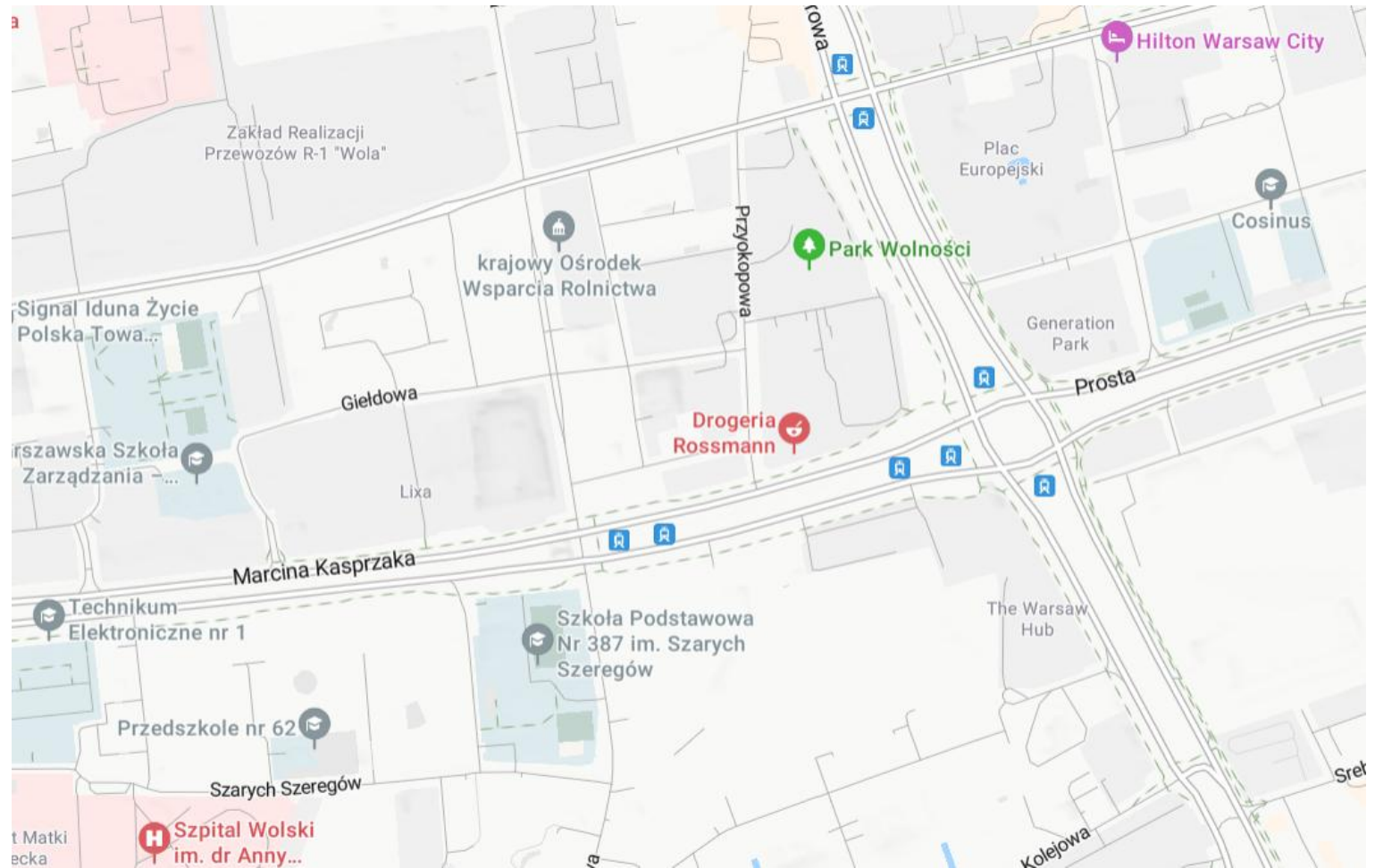
## Comfort in the business heart of the capital:

- Three 7-12 story buildings
- Apartments from 1 to 5 rooms
- Reception with lobby
- High-quality materials: stone, wood, glass
- Green courtyard with a relaxation area
- Balconies or terraces in most apartments
- **Sustainable complex in Warsaw's business center:**  
The project is part of a sustainable development near Rondo Daszyńskiego, which also includes two 29-story towers. Apartments range from 25 to 114 m<sup>2</sup>, with balconies and terraces up to 100 m<sup>2</sup>.



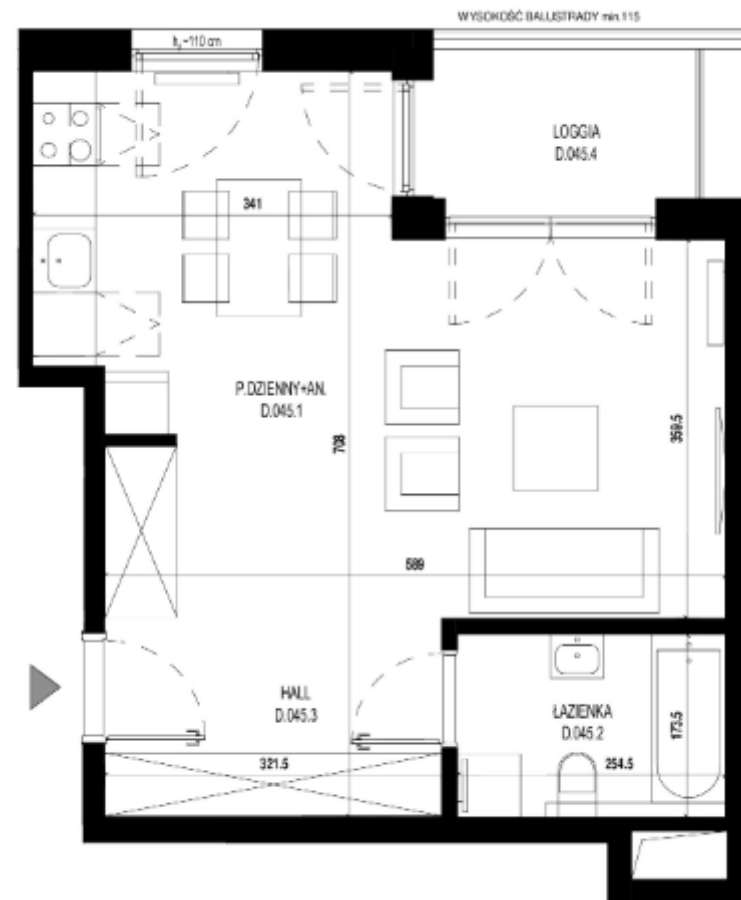
# Location

---



# Apartment D.045

- **Number of rooms: 1**  
**Floor: 1**  
**Area: 37.87 m<sup>2</sup>**  
**Price per m<sup>2</sup>: 29,125.87 PLN**  
**Price: 1,102,996.59 PLN**



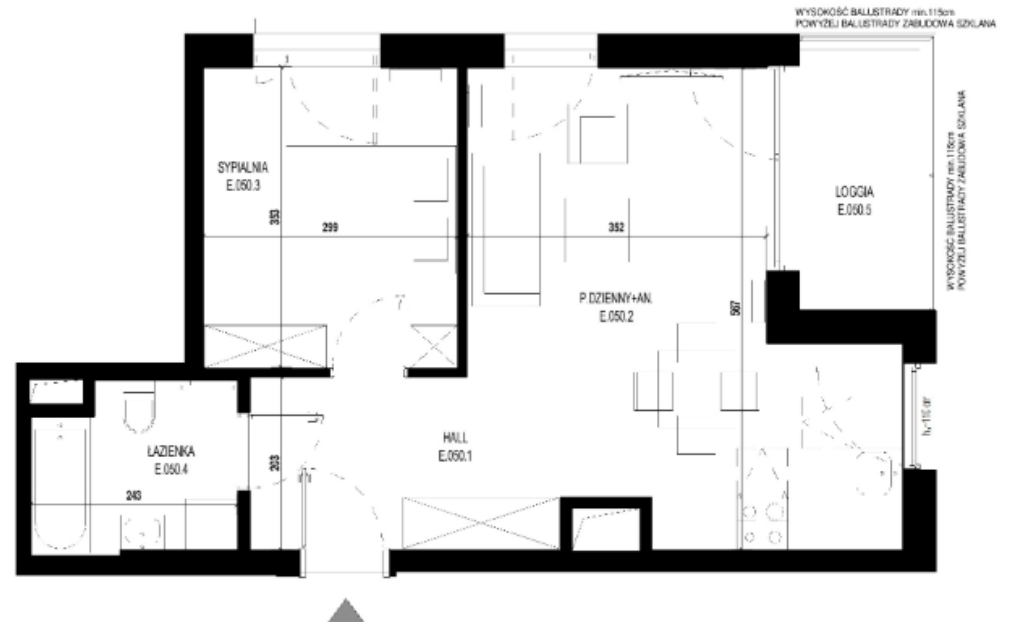
NR LOKALU **D45**

**1-pokojowe**

D.045.1	P. DZIENNY+AN	27.49 m <sup>2</sup>
D.045.2	ŁAZIENKA	4.42 m <sup>2</sup>
D.045.3	HALL	5.91 m <sup>2</sup>

# Apartment E.050

- **Number of rooms: 2**  
**Floor: 1**  
**Area: 43.29 m<sup>2</sup>**  
**Price per m<sup>2</sup>: 29,152.84 PLN**  
**Price: 1,262,026.45 PLN**

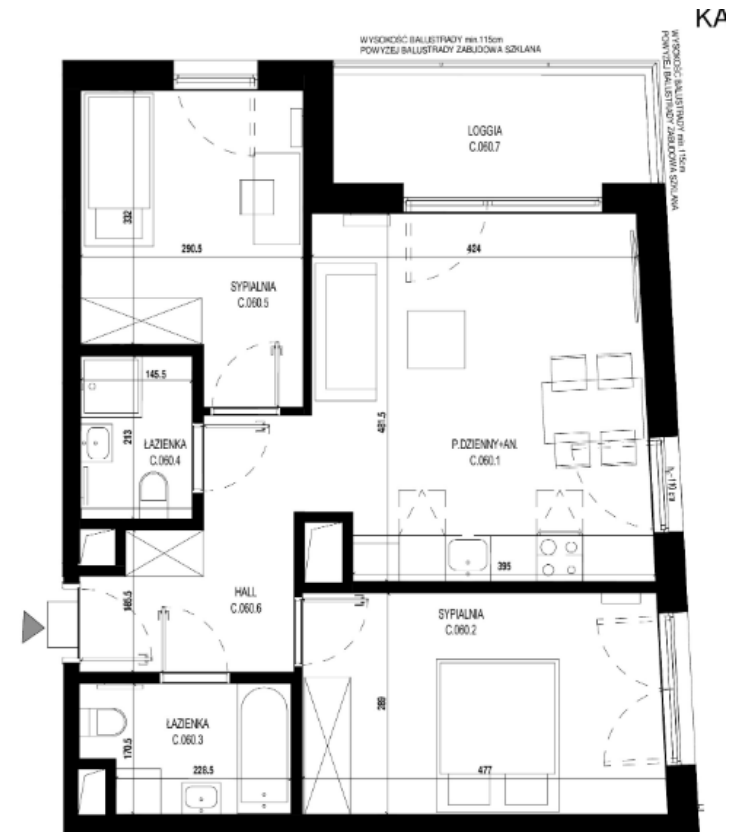


NR LOKALU **E50**  
2-pokojowe

E.050.1	HALL	7.41 m <sup>2</sup>
E.050.2	P.DZIENNY+KUCHNIA	20.94 m <sup>2</sup>
E.050.3	SYPIALNIA	10.55 m <sup>2</sup>
E.050.4	LAZIENKA	4.58 m <sup>2</sup>

# Apartment C.060

- **Number of rooms: 3**  
**Floor: 3**  
**Area: 59.05 m<sup>2</sup>**  
**Price per m<sup>2</sup>: 26,757.90 PLN**  
**Price: 1,580,054.28 PLN**



NR LOKALU **C60**  
3-pokojowe

C.060.1	P.DZIENNY+AN	20.78 m <sup>2</sup>
C.060.2	SYPIALNA	13.57 m <sup>2</sup>
C.060.3	LAZIENKA	4.37 m <sup>2</sup>
C.060.4	LAZIENKA	3.10 m <sup>2</sup>
C.060.5	SYPIALNA	10.71 m <sup>2</sup>
C.060.6	HALL	6.65 m <sup>2</sup>

# Apartment C.067

- **Number of rooms: 4**  
**Floor: 4**  
**Area: 73.50 m<sup>2</sup>**  
**Price per m<sup>2</sup>: 26,762.74 PLN**  
**Price: 1,967,061.24 PLN**



## NR LOKALU C67 4-pokojowe

C.067.1	P.DZIENNY+AN.	22.62 m <sup>2</sup>
C.067.2	ŁAZIENKA	3.88 m <sup>2</sup>
C.067.3	SYPIALNIA	10.54 m <sup>2</sup>
C.067.4	SYPIALNIA	10.35 m <sup>2</sup>
C.067.5	SYPIALNIA	10.47 m <sup>2</sup>
C.067.6	ŁAZIENKA	4.06 m <sup>2</sup>
C.067.7	HALL	11.87 m <sup>2</sup>









ASBUD  
Group





## Contacts

- +48 666 871 060
- +48 692 928 018
- +38 067 239 46 14 (Viber, Telegram, WhatsApp)