

Premium apartments in the Wola district

Completion date: Q2 2025



About the investment

- The investment consists of 2 modern buildings, in which 243 apartments will be developed. On the roof of one of the buildings, there will be a garden accessible to residents, as well as terraces belonging to apartments located on the top floor. Gardens will also be available in the inner courtyard of the project. On the eastern side of the property, there will be an open pedestrian passage with commercial and service premises, connecting Chmielna Street with Złota Street. The investment will be implemented in the spirit of sustainable development and the concept of a modern "15-minute city."



Parking spaces are sold only for apartments over 42 m².

- Single parking spaces priced at 160,000 PLN.
- Family parking spaces priced at 230,000 PLN.
- Storage units priced at 12,000 PLN/m².



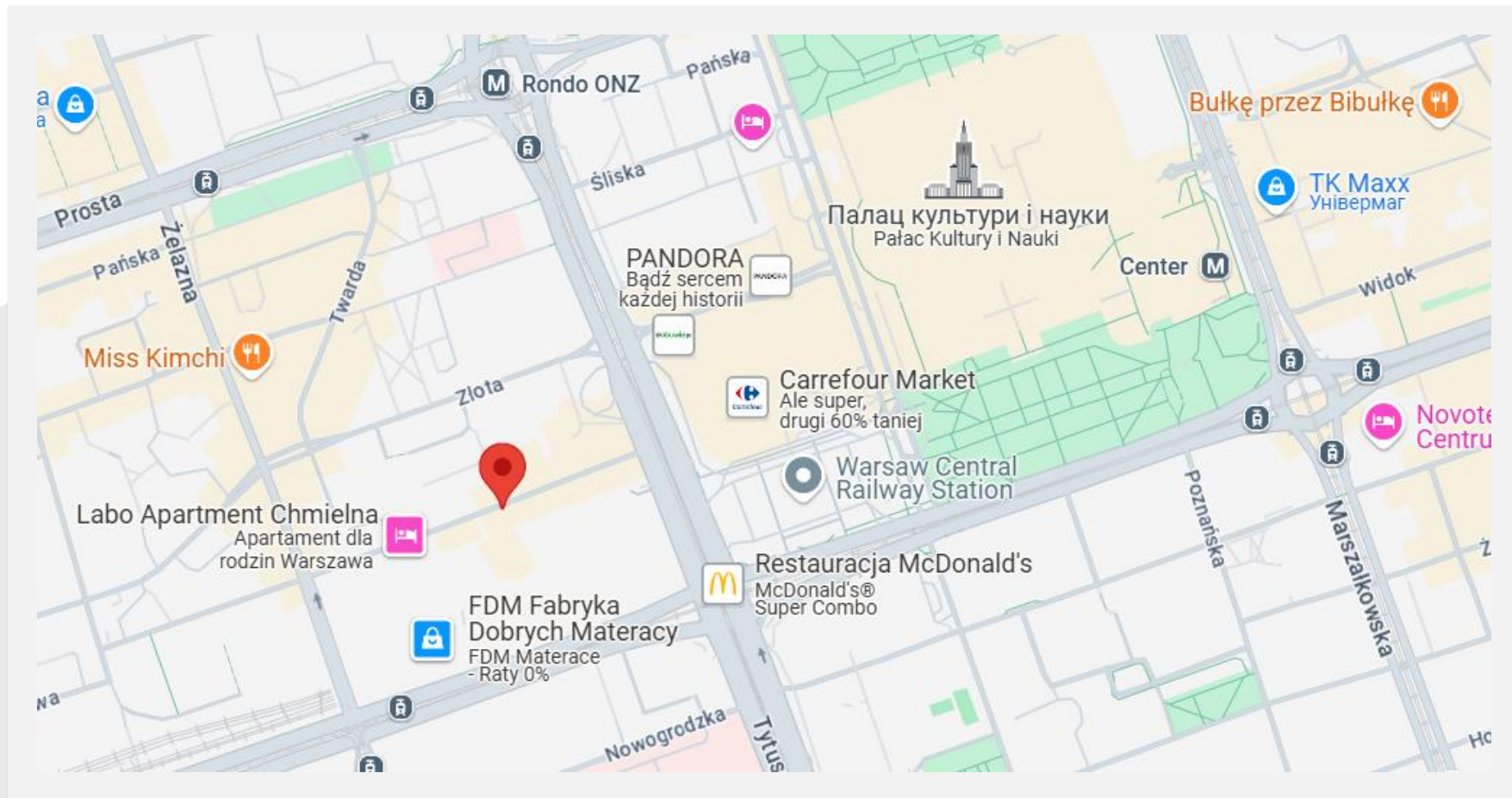
Additional information:

Location: A convenient location in the center of Warsaw between Chmielna and Złota streets, near the Varso Tower skyscraper, just 6 minutes on foot from the Central Railway Station and Złote Tarasy Mall.

Development: shared terrace with a garden on the roof, eco-friendly solutions, green pedestrian passage with commercial and service premises, storage units, underground parking, garage boxes, bike racks, bike wash, and repair station.

Interiors: high standard of finish, reception with concierge, large windows, wooden window joinery, monitoring and security, video intercoms, apartment heights: 2.84m on the top two floors and 2.74m on the remaining floors.





Location

Price

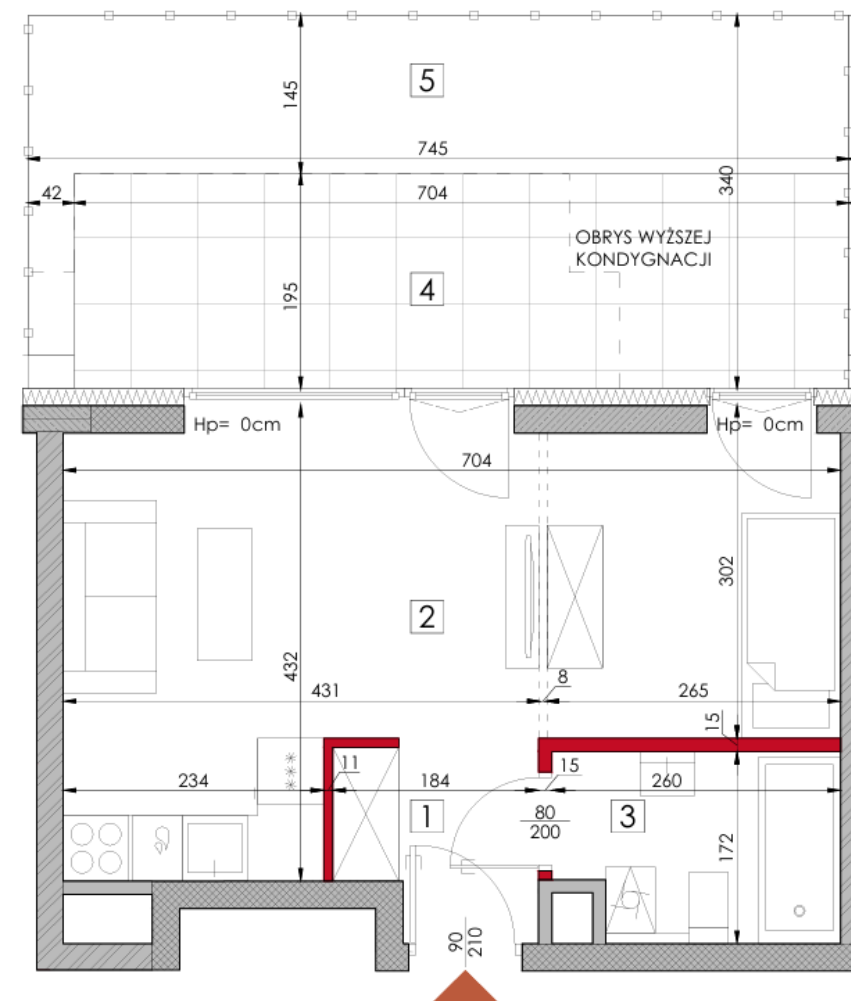
NUMER	BUDYNEK	METRAŻ	PIĘTRO	POKOJE	CENA	CENA M2	TERMIN ODDANIA
B1.3	B	30,62 m ²	0	1	1 040 400 zł	33 977 zł	2025-06-30
B1.4	B	31,61 m ²	0	1	1 068 144 zł	33 791 zł	2025-06-30
B1.21	B	33,76 m ²	1	1	1 077 018 zł	31 902 zł	2025-06-30
B1.35	B	33,76 m ²	2	1	1 082 628 zł	32 068 zł	2025-06-30
B1.66	B	30,37 m ²	5	1	1 093 454 zł	36 004 zł	2025-06-30
B1.39	B	31,61 m ²	3	1	1 095 000 zł	34 640 zł	2025-06-30
B1.94	B	30,37 m ²	7	1	1 121 372 zł	36 923 zł	2025-06-30
B1.95	B	31,61 m ²	7	1	1 175 000 zł	37 171 zł	2025-06-30

Price

NUMER	BUDYNEK	METRAŻ	PIĘTRO	POKOJE	CENA	CENA M2	TERMIN ODDANIA
A2.121	A	89,28 m ²	8	3	3 739 116 zł	41 880 zł	2025-06-30
B1.109	B	83,07 m ²	8	3	3 391 296 zł	40 824 zł	2025-06-30
B1.102	B	42,14 m ²	7	1	1 580 000 zł	37 494 zł	2025-06-30
B1.95	B	31,61 m ²	7	1	1 175 000 zł	37 171 zł	2025-06-30
B1.94	B	30,37 m ²	7	1	1 121 372 zł	36 923 zł	2025-06-30
B1.66	B	30,37 m ²	5	1	1 093 454 zł	36 004 zł	2025-06-30
B1.89	B	36,12 m ²	6	1	1 286 806 zł	35 625 zł	2025-06-30
A2.99	A	42,92 m ²	2	2	1 524 288 zł	35 514 zł	2025-06-30

Apartment B1.3

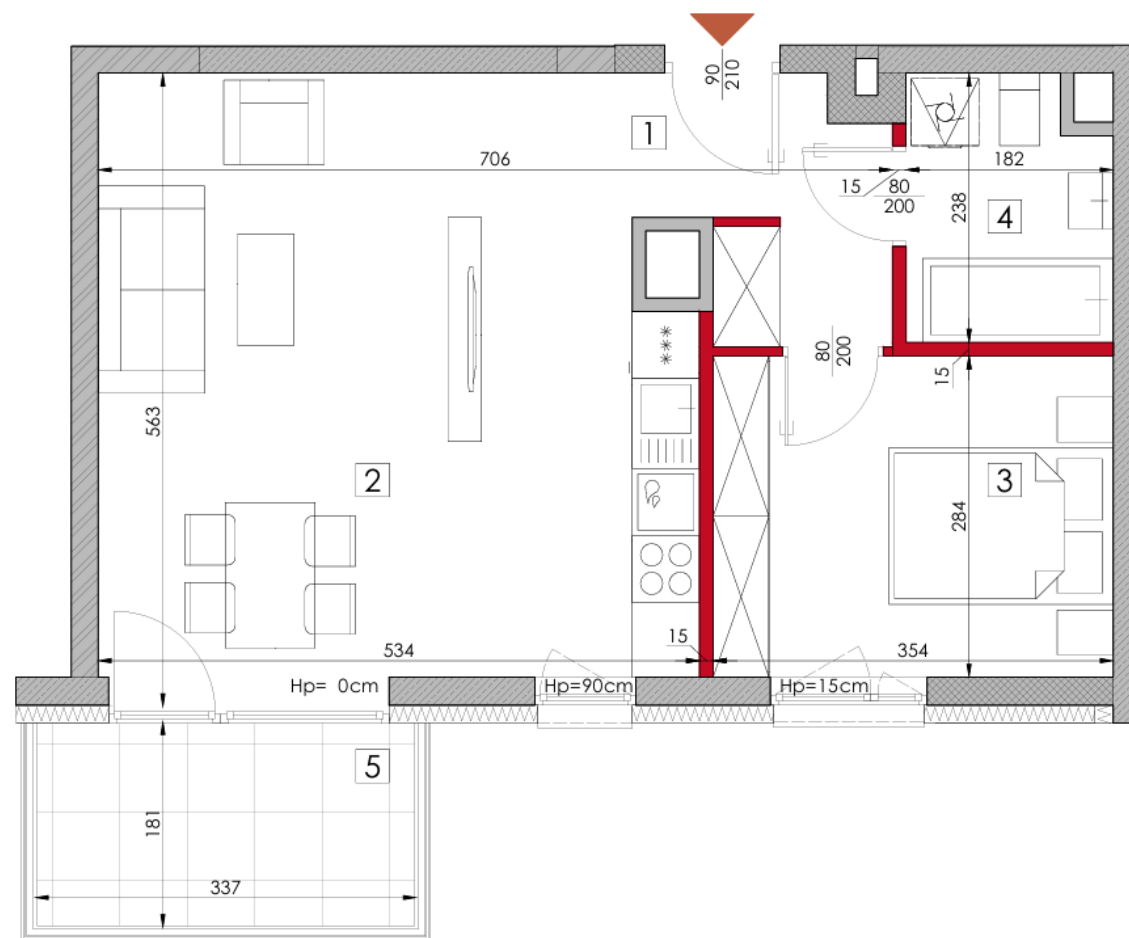
- **Number of rooms:** 1
- Area:** 30.62 m²
- Floor:** 0
- Price per m²:** 33,977 PLN
- Price:** 1,040,400 PLN



1	HOL	3.01m ²
2	POKÓJ + ANEKS KUCHENNY	23.43m ²
3	ŁAZIENKA	4.18m ²
RAZEM		30.62m ²
4	TARAS	13.72m ²
5	OGRÓDEK	11.57m ²

Apartment B1.64

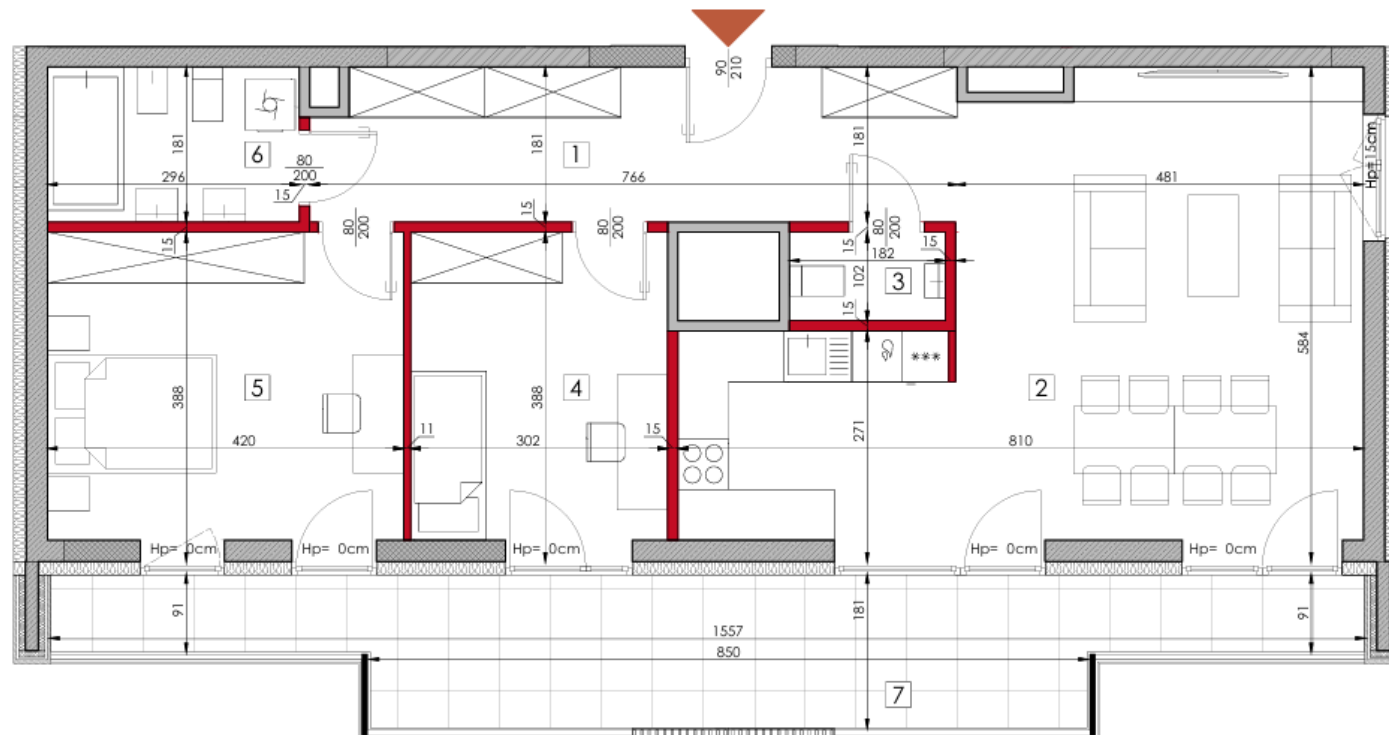
- **Number of rooms: 2**
Area: 46.51 m²
Floor: 5
Price per m²: 34,451 PLN
Price: 1,602,323 PLN



1	HOL	6.10m ²
2	POKÓJ + ANEKS KUCHENNY	26.30m ²
3	POKÓJ	10.05m ²
4	ŁAZIENKA	4.06m ²
RAZEM		46.51m ²
5	BALKON	6.10m ²

Apartment B1.109

- **Number of rooms: 3**
Area: 83.07 m²
Floor: 8
Price per m²: 40,824 PLN
Price: 3,391,296 PLN



1	HOL	13.55m ²
2	POKÓJ + ANEKS KUCHENNY	35.33m ²
3	WC	1.86m ²
4	POKÓJ	11.31m ²
5	POKÓJ	15.67m ²
6	ŁAZIENKA	5.35m ²
RAZEM		83.07m ²
7	LOGGIA	21.82m ²













Contacts

- +48 666 871 060
- +48 692 928 018
- +38 067 239 46 14 (Viber, Telegram, WhatsApp)